

Park 7 Residential Showflat

(ARCHITECT'S STATEMENT)

» Park 7 has been designed as "bungalows in the sky". The 7 rectilinear-shaped units per floor are planned radially in two interconnected clusters, each served by a central core for maximum external views, natural light

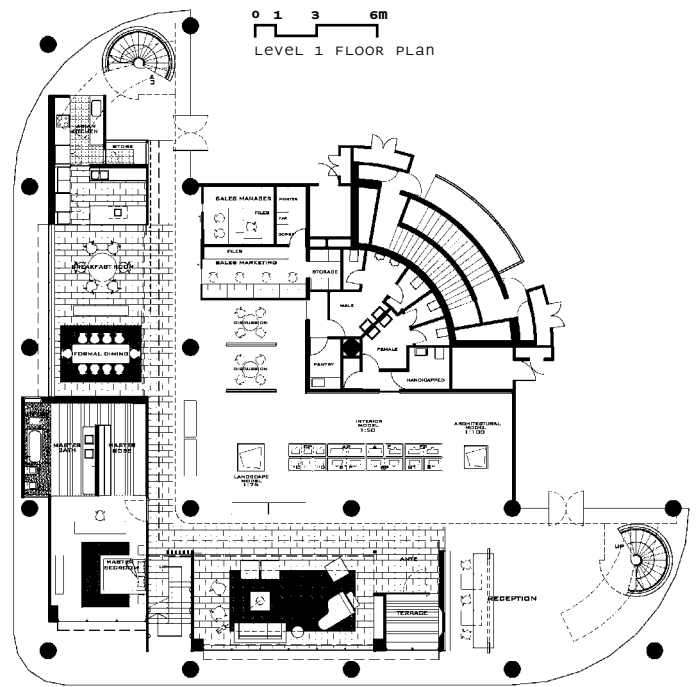
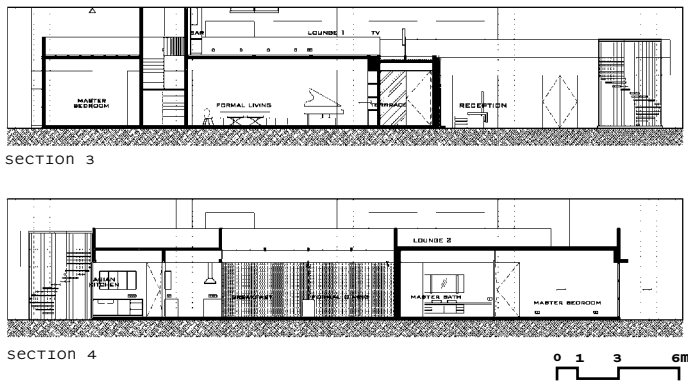
and ventilation.

The project is about living in the tropics, where shelter was basically about protection from the elements and the inducement of natural light and ventilation. It is also about the reconcili-

ation of living in a bungalow as opposed to living in a high-rise condominium.

The full-height laminated glazing is protected by horizontal ledges, which acts as a sun and rain breaker, augmented by low-E glass on the eastern





and western façades.

The structural design has been integrated closely with the architecture to achieve column-free interiors and flat slab construction for optimal ceiling height and flexibility in planning.

- 1 Show room
- 2 Show room reception





3 Living room
4 Master bedroom
5 Master bath

LOCATION
Ground South, Wisma Selangor
Dredging, 142A Jalan Ampang,
Kuala Lumpur

CLIENT
Selangor Dredging Sdn Bhd

**DESIGN CONSULTANT &
INTERIOR DESIGNER**
CSYA Studio Pte Ltd

ARCHITECT
Yap Hock Seong Architects

**CIVIL & STRUCTURAL
ENGINEER**
Web Structures International Ltd

**MECHANICAL & ELECTRICAL
CONSULTANT**
Maunsell NVOF

QUANTITY SURVEYOR
Northcroft Lim Perunding S/B

LANDSCAPE DESIGNER
Colin K. Okashimo and
Associates

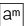


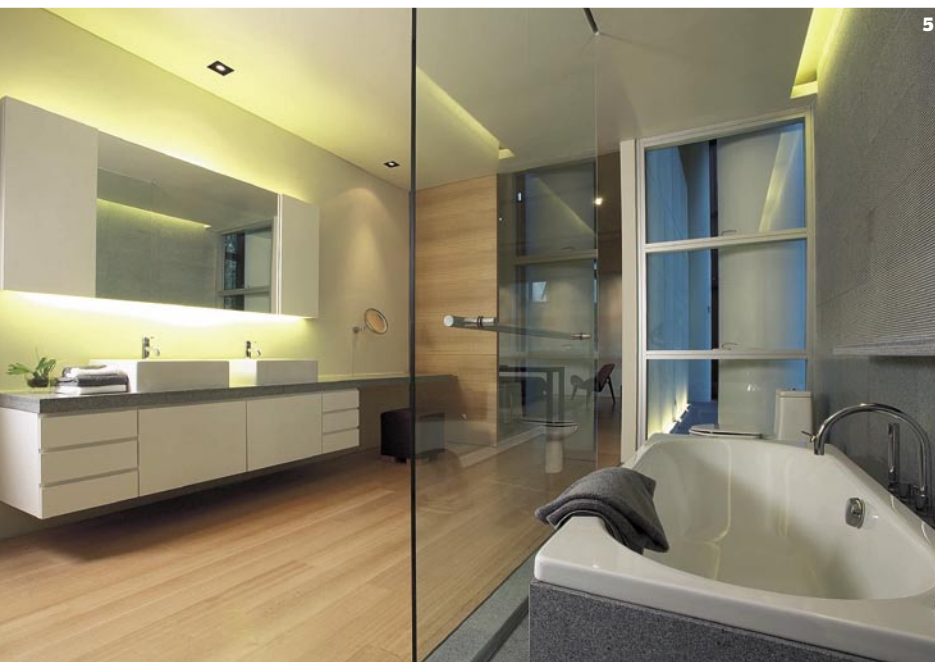
4

The landscape design is a recognition of the architectural modernism and the sense of place, as well as respect for the integrity of materials used.

Art in the form of two bronze sculptures have been commissioned for the public areas to create an identity and spirit of community.

The main communal and recreational facilities are planned on the landscaped roof of the ground floor car park podium as a double volume breezeway featuring lap and heated swimming pools, ponds, coloured glass screens and glazed pavilions enclosing the gymnasium, yoga / pilates, multi-purpose room and children's play area.

The materials used for construction are left exposed as much as practicable in their natural state. The reinforced concrete structure is exposed and impregnated with a water repellent solution. The aluminum framed glazing system is naturally anodized. Galvanized steel gabions with selected stones are used as external feature walls, while rolled and perforated steel sheets are used for entrance gates. Timber is unstained and is left with a natural finish, while the marble is honed and unpolished. 



5