

MEASURED DRAWINGS OF PAM CENTRE

BY ELYAS MOHD JARAMI, HANIZA HISHAM, IZNNY ISMAIL, NADIYAH NOOR HISHAM, SITI ZURAIDAH MOHD SIDEK
FROM DEPARTMENT OF ARCHITECTURE, UITM PERAK DARUL RIDZUAN

Architecture is expressed through the language of drawing. It enables architects to communicate, express and translate their ideas into form. Measured drawings help record built-form. In addition they are able to document structure, record details and the types of materials and construction used.

Pertubuhan Akitek Malaysia (PAM) is located in a historically important building in Kuala Lumpur, and its origins are as follows:

As Loke Hall (1907-1909). Prominent businessman and municipal councilor, Loke Chow Kit built this sprawling mansion in 1907. Chow Kit could have been much influenced by what he saw during his 1903 European tour with Loke Yew. Built as a town house, it also housed a suite of offices for his mining ventures. Chow Kit could have employed A.K. Musdeen, an Anglo-Indian as his architect. Musdeen designed for Chow Kit Kuala Lumpur's first department store, the present day Industrial Court Building. In those days, Loke Hall was just up the road from the first railway station. Chow Kit's main home, "Desswood Place" was sited on a nine-hectare orchard in Jalan Ampang.

As Empire Hotel (1909-1919), As Peninsular Hotel (1919-1973). In 1909, Loke Hall was taken over by a European Group who turned it into the Empire Hotel and remained so for 10 years. Meanwhile in 1916, the ownership of Loke Hall fell to Alan Loke, son of Loke Yew. Loke Hall was renovated yet again and became the Peninsular Hotel. As Empire and then the Peninsular, Loke Hall became a meeting ground for planters and members of the trading houses until 1973 when PAM acquired tenancy of the premises on an initial 2 years lease.

As PAM Centre (1973-current). In February 1981, the estate of Alan Loke gave PAM notice to deliver vacant possession of the premises before 1 April 1981 as they had sold Loke Hall to Intan Development Sdn Bhd which intended to demolish the PAM Centre Building and the adjoining properties which were part of Loke Hall.

The proposal to demolish Loke Hall and redevelop the site drew much public concern.



PAM, conservationists and concerned members of the public made representation to KL City Hall. Consequently DBKL decided to acquire Loke Hall. The then Lord Mayor, Tan Sri Dato' Elyas Omar, on 24 December 1983 wrote to PAM of restoration and refurbishment works to the building. Subsequently PAM's proposal was submitted to the Datuk Bandar and accepted.

The case for the conservation of Loke Hall arises from its historical, architectural, social and cultural interests. The building is:

1. More than neo-classical in styling; the north wing has a Regency flavour with its balcony terrace and eclectic features.
2. Skillfully laid out with an atrium incorporated and symmetrically composed. It was designed in heavy load bearing masonry yet adapted for tropical living.
3. Artistically built and with a high degree of the Chinese artisan craftsmanship which has since been lost.

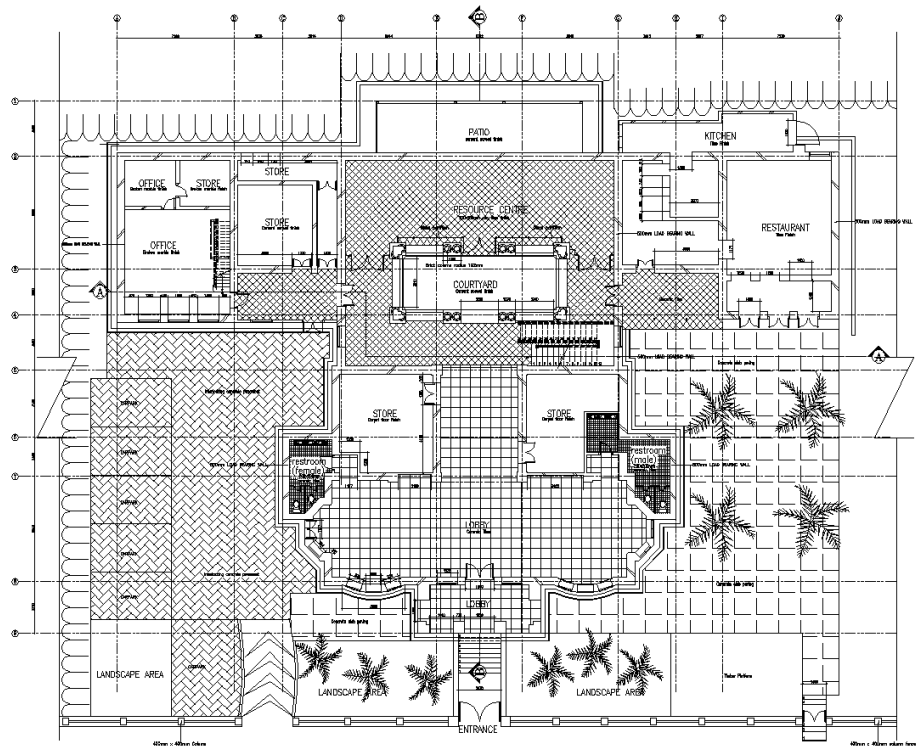


1 PAM Centre at Jalan Tangsi
2 PAM Centre in the 1970s

4. The pediment, hooded moulds and fanlights, porch, loggia, blind arcade, corner quoins, and Regency verandah are only a few of the many details that would intrigue conservationists and architects.
5. A major part of the whole architectural composition comprising the stables annex, Nos 8, 12 and 14 Jalan Tangsi, up to the present Wisma Ekran.

PAM in its dual role as "tenant Architect" and "custodian" of a building gazetted under the Antiquities' Act has fulfilled its obligations to maintain the building in a good state of repair and restore it in the manner of a model "conservation" and "adaptive reuse" project.

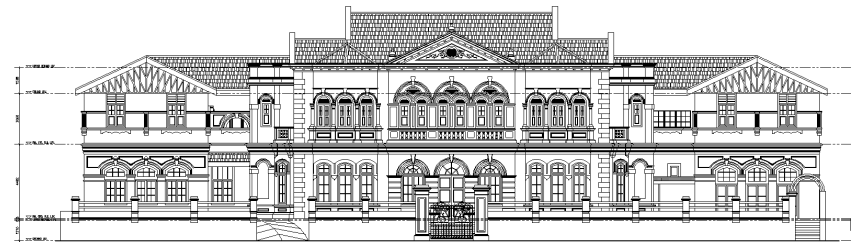
This historic structure would not be standing today if not for KL City Hall's support for conservation. This building therefore stands as a continuing testimony to KL City Hall's commitment to conservation and the personal interest of our then Lord Mayor, Tan Sri Dato' Elyas Omar. am



0 1 3 5 10m N
GROUND FLOOR PLAN



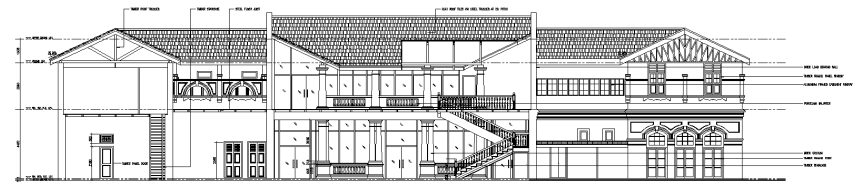
3



0 1 3 5 10m
FRONT ELEVATION



4



0 1 3 5 10m
SECTION a-a



5

- 3 The front façade of PAM Centre
- 4 Outdoor courtyard
- 5 PAM Resource Centre